



**REAL TECH
FORGE**

www.realtechforge.com



WHO WE ARE

REAL TECH FORGE is one of the leading manufacturer of forged parts and precision turned components. It is full fledged forging plant.

We are holding state of art in house Tool Room facility comprising CNC & Conventional Milling Machine, Lathes, Shaping Machine, EDM Machines. All dies required for manufacturing forgings are manufactured In-house. Our Facilities includes battery of belt drop hammers with capacity of 1 Ton, 1.5 Ton & 2 Ton.



WHAT WE DO

We can take up forgings , castings , machining and assemblies according to drawings, specifications, material details, and samples provided by the customers.

We can do forging of ferrous, non-ferrous, and other alloy materials, etc

We have a sound infrastructure, full fledged forging shop with modern equipment. The company is professionally managed by well experienced team having 30 years of experience in this field. We are always alert in maintaining quality, accuracy, stringent manners and reasonability in price.



Organization Vision, Mission & Values

VISION : We at REAL TECH shall strive vigorously to delight our customers, by pursuing excellence and innovation through committed team work.

To this end we shall promote continuous learning, achievement orientation and ethical business practices, which will make us, shine as a world class gear manufacturer.

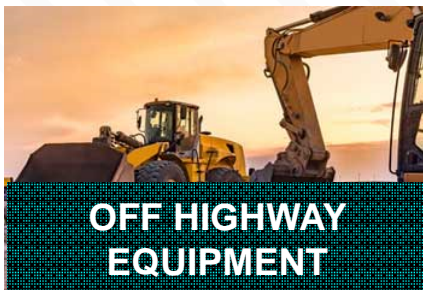
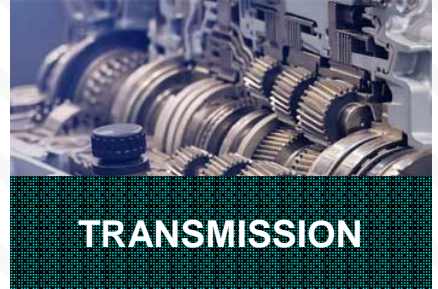
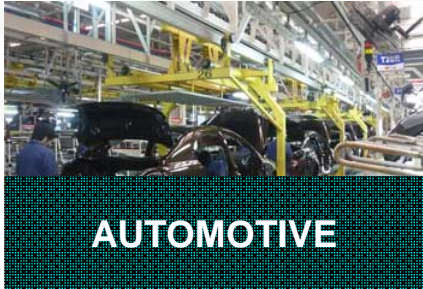
MISSION : To create and reinforce our position as leading Indian manufacturer of automotive gears and aggregates and meet the aspiration of customers in domestic and export markets. This will be achieved through on time zero defect supplies at optimum cost backed by responsive services and empowered employees.

VALUES :

- ***Customer is first priority***
- ***Business ethics***
- ***Care of environment and society***
- ***Empowerment***

- ***Transparency***
- ***Team Work***
- ***Confidentiality***
- ***Professional Behaviour***

WE MANUFACTURE PARTS FOR



FACILITIES



DIE SHOP

MACHINES	QNT(NOS)
VMC JYOTI 1050	4
MILLING MACHINE	2
LATHE MACHINES	4
SHAPING MACHINE	1
EDM MACHINE	1
DRILLING MACHINE	2
WELDING MACHINE	2
DISC GRINDER	2
CNC JYOTI	4

CUTTING SHOP

MACHINES	QNT(NOS)
SHEARING MACHINE 50mm	1
HACKSAW MACHINE	1



FORGE SHOP AND SHEET METAL

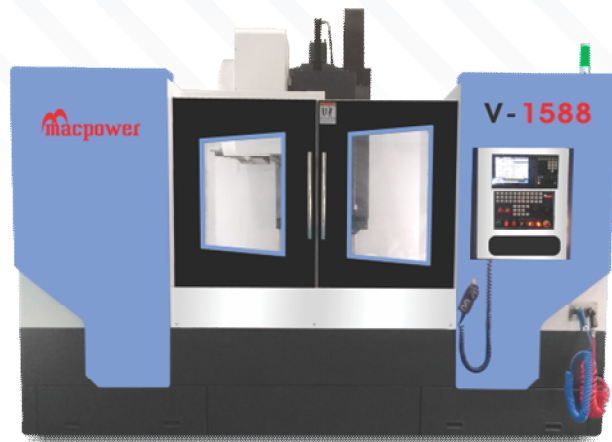
MACHINES	QNT(NOS)
BELT DROP HAMMER - 1 TON	1
MPM HAMMER 1800KJ (1.5TONS)	1
INDUCTION BILLET HEATER	2
SCREW PRESS - 150 TONS	2
SCREW PRESS - 350 TONS	1
METAL GATHERING MCHN(UPSET)	3
POWER PRESS – 10 TONS	2
POWER PRESS – 20 TONS	1
POWER PRESS – 100 TONS	1
BENCH GRINDER	5
OVER HEAD CRANES	2
AIR COMPRESSOR	1
SHOT BLASTING MACHINE	1



FACILITIES

MACHINE SHOP

MACHINES	QNT(NOS)
VMC - MAKE - AMS SIZE – 850 Model – 2018	1
VMC - MAKE - Macpower SIZE - 1588 Model – 2022	1
VMC - MAKE – Jyoti SIZE - 450 Model – 2017	1
VMC - MAKE - COSMOSSIZE - 1060 Model – 2017	1
CNC – Make – Jyoti	2
CNC – Make – Micromatic	2



FACILITIES



REAL TECH
FORGE

QUALITY

Description	Range	Qty
Digital Vernier	0 To 150mm	02 Nos.
Dial Vernier	0-150 mm	03 Nos.
Vernier Height Gauge	0-600 mm	01 No.
Surface Plate	400x400 mm	01 No.
Digital Caliper	0-150 mm	01 No.
External Micrometer	0-25 mm	01 No.
External Micrometer	25-50 mm	01 No.
Hardness Tester		01 No.



HEAT TREATMENT

Description	Capacity
INHOUSE PIT TYPE ELECTRIC FURNANCE	01 TON
INHOUSE HARDENING TEMPERING FURNANCE	200 Kgs



CHEMICAL & PHYSICAL TESTING

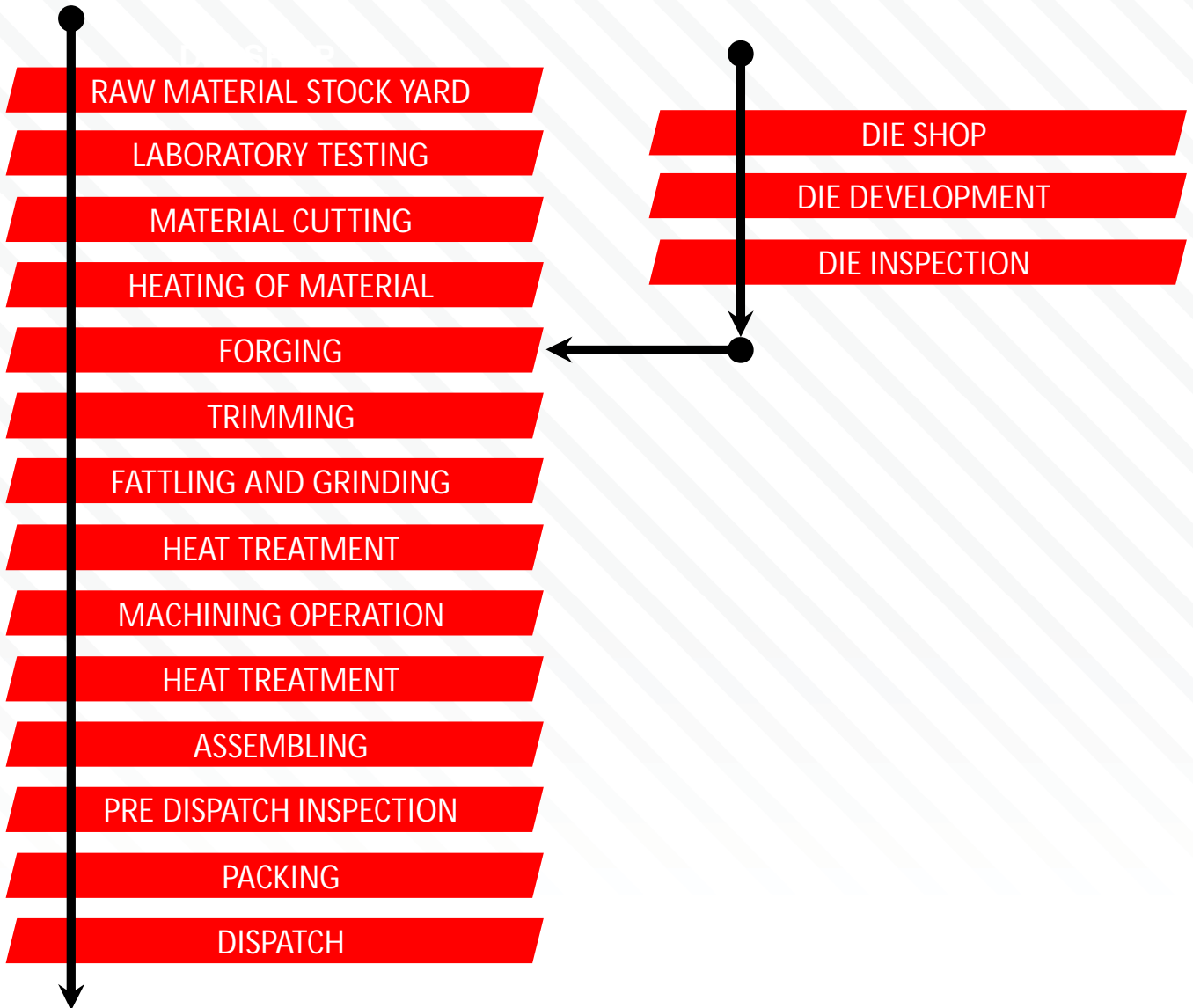
Laboratory

THE NATIONAL SMALL INDUSTRIES CORPORATION LTD – RAJKOT
(A GOVT. OF INDIA UNDERTAKING).

ALPHA LABORATORY SERVICES – RAJKOT
(NABL ACCREDITED LABORATORY)



PROCESS FLOW WE FOLLOW





Certificate of Registration

This certificate has been awarded to

REAL TECH FORGE

Survey No. 287/1, Plot No. 6, Panch Pipla Chowk, Shapar Main Road, Tirupati Cotton Mill Street, Shapar Veraval, Rajkot, Gujarat, 360024, India

in recognition of the organization's Quality Management System which complies with

IATF 16949:2016

The scope of activities covered by this certificate is defined below

Manufacture of Forged Parts (Excludes Product Design under Clause 8.3)

Certificate Number **116107/A/0001/SM/En**

A certificate number of 0001, confirms the Client has a single site Certified & the site is their Head Office or Main site in relation to the Certified scope with URS. A certificate number of 0002, or greater (e.g. xxxx/9/0002/UK/En) refers to a client that has more than one site certified with URS, as such, the following statement shall apply: "The validity of this certificate depends on the validity of the main certificate."

Date of Issue of Certification Cycle	Issue Number	Certificate Expiry Date	Certification Cycle
04 June 2022	2	03 June 2025	2
Revision Date	Revision Number	Original Certificate Issue Date	Scheme Number
04 June 2022	0	07 June 2021	0451257

For detailed explanation for the data fields above, refer to <http://www.urs-holdings.com/logos-and-regulations>

Issued by

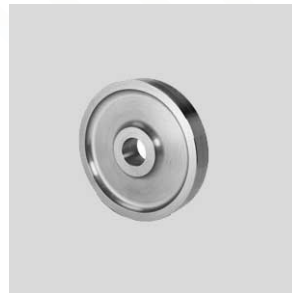
On behalf of the Schemes Manager



PRODUCT GALLERY



**REAL TECH
FORGE**





**REAL TECH
FORGE**

Quality and Environment Policy:

Quality Policy :

REAL TECH is committed to providing quality work to our customers that meets the standards and specifications for materials, workmanship, tolerances, timeline and service while maintaining profitability and competitiveness.

REAL TECH ensures continual improvement through quality system, which are directed by a strong management team

Environment Policy:

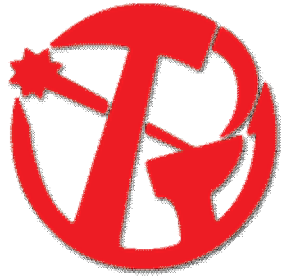
REAL TECH recognizes that the manufacturing industry can have a significant impact on the environment. We are committed to conducting its activities in an environmentally responsible manner.

REAL TECH goal is to meet environmental protection standards expected by the community at large and by government, and to strive to exceed those standards

Health and Safety Policy:



- *"The Global Health and Safety Policy present our vision for promoting and continuously improving a health and safety culture at REAL TECH. The policy also states our commitment to maintain a safety culture that encourages each of us to take responsibility for our own safety, our colleagues, clients and supply partners."*
- *Our aim is to provide a safe and healthy workplace and to promote an effective and continuously improving health and safety culture. We continue to prevent injury and accidents to ensure that all persons at work place are working safely and returning their home safely.*
- *We are committed to the highest standards of safety performance possible. We develop an organized and effective safety program for every phase of every project. We evaluate and reevaluate risks inherent in every activity performed every day down to the level of every crew.*
- *Providing a safe work environment is every employee's responsibility, every subcontractor's responsibility and first priority. Adherence to safety policies is a condition of employment.*



REAL TECH FORGE

Address: Survey No. 287/1, Plot No. 6,
Panch Pipla Complex Chowk,
Near pal Rikshaw, Shapar Main Road,
Shapar (Veraval) – 360 023. Dist. Rajkot
Gujarat(India)

Call Us: +91 02827 253127 / +91 90990 18128 / +91 90990
18127

Email: info@realtechforge.com
Email: realtechforge@yahoo.in

www.realtechforge.com